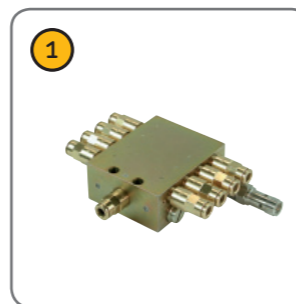
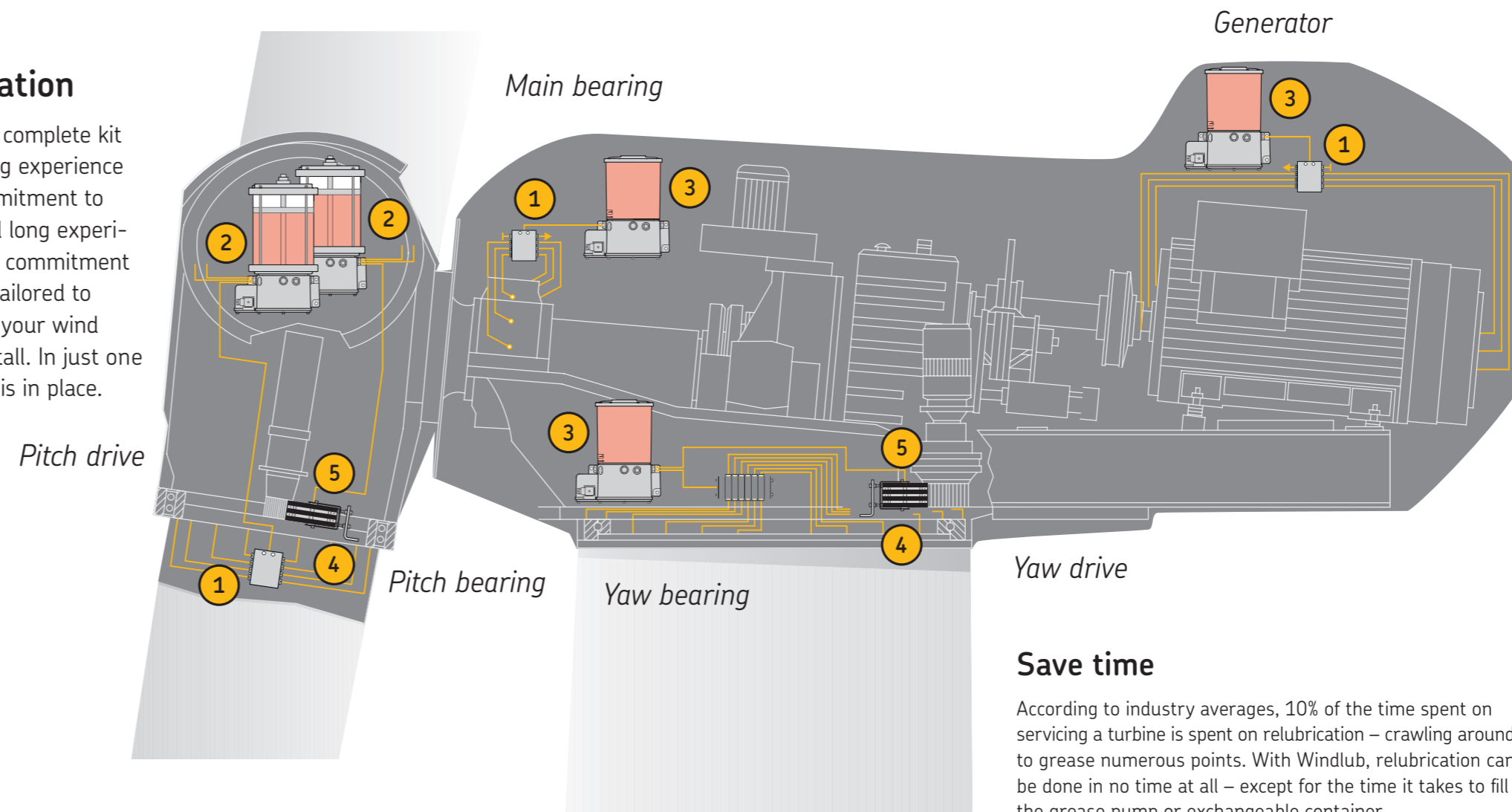




A complete kit for relubrication of all points

Ready for installation

The Windlub® system is a complete kit developed through our long experience and uncompromising commitment to quality. Here we combined long experience and uncompromising commitment to quality. The kit can be tailored to meet the requirements of your wind farm. It is also easy to install. In just one to three days, everything is in place.



Progressive feeder
Block type VPBM.



Grease pump
Special pump for rotating applications.



Grease pump
KFG type for non-rotating applications.



Lubricant collector
Attachable to open geared wheels.



Lubricant pinion
For pitch and azimuth drive wheel.

Save time

According to industry averages, 10% of the time spent on servicing a turbine is spent on relubrication – crawling around to grease numerous points. With Windlub, relubrication can be done in no time at all – except for the time it takes to fill the grease pump or exchangeable container.

Save money

Being able to manage your overall relubrication efforts saves money. With a relubrication system in every turbine, you get a complete overview of the total lubricant consumption and can make smarter purchases, directly from SKF. While you simplify logistics planning and time allocation for your service organization.

Full control

Now you can be certain that each position is being lubricated in the way you want it to be. By combining Windlub with the SKF WindCon condition monitoring system you



get a complete overview and full control. SKF WindCon alerts you if your remote lubrication systems are not activated. You also know when the grease in the pumps is running low or if a particular lubrication system is not working optimally.

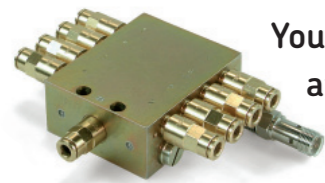
Not just for the big ones

In large turbines, Windlub lubrication system is already the ideal solution. Yet the functions and advantages are just as relevant in older and smaller units. SKF technicians have the experience to recommend the solution that best meets the needs of your



application. Everything is tailored to your reality.

Reach the top without climbing



You know exactly what it's about. And you don't need any training on the importance of regular relubrication. So we're going to talk about something completely different. Something that no manual or service program in the world takes up. Namely, the quality of the lubrication – and the time it takes to get it done right.

After all, the number of lubrication points in each turbine range from 20 to 80 or more. That's a lot of nipples to grease. Keeping track is not easy – especially when working in the cramped spaces of the blades. Every lubricant position requires time.

Look at the device shown here. It is the heart of a complete solution for the accurate relubrication of all points on a wind turbine. Without anybody having to climb a single step – except to fill the pump every now and then.

SKF is a registered trademark of the SKF Group.

© SKF 2006
The contents of this publication are the copyright of the publisher and may not be reproduced (even extracts) unless permission is granted. Every care has been taken to ensure the accuracy of the information contained in this publication but no liability can be accepted for any loss or damage whether direct, indirect or consequential arising out of the use of the information contained herein.

Publication 6312 EN • May 2006

www.skf.com



VOGEL®

How far are you prepared to go for reliable lubrication?

Introducing Windlub® lubrication kit
for already installed turbines

